

**BALDOR® • RELIANCE** 

**Product Information Packet**

**VUHM3611T**

**3HP,1750RPM,3PH,60HZ,182TC,3542M,TEFC,F3**

| Part Detail |        |             |            |             |        |               |            |
|-------------|--------|-------------|------------|-------------|--------|---------------|------------|
| Revision:   | P      | Status:     | INA/A      | Change #:   |        | Proprietary:  | No         |
| Type:       | AC     | Elec. Spec: | 35WGP797   | CD Diagram: | CD0005 | Mfg Plant:    |            |
| Mech. Spec: | 35X066 | Layout:     | 35LYX066   | Poles:      | 04     | Created Date: | 12-29-2008 |
| Base:       | N      | Eff. Date:  | 03-08-2016 | Leads:      | 9#18   |               |            |

| Specs                           |                         |                                |                 |
|---------------------------------|-------------------------|--------------------------------|-----------------|
| Catalog Number:                 | VUHM3611T               | Heater Indicator:              | No Heater       |
| Enclosure:                      | TEFC                    | Insulation Class:              | F               |
| Frame:                          | 182TC                   | Inverter Code:                 | Not Inverter    |
| Frame Material:                 | Steel                   | KVA Code:                      | L               |
| Output @ Frequency:             | 3.000 HP @ 60 HZ        | Lifting Lugs:                  | No Lifting Lugs |
| Synchronous Speed @ Frequency:  | 1800 RPM @ 60 HZ        | Locked Bearing Indicator:      | Locked Bearing  |
| Voltage @ Frequency:            | 208.0 V @ 60 HZ         | Motor Lead Quantity/Wire Size: | 9 @ 18 AWG      |
|                                 | 460.0 V @ 60 HZ         | Motor Lead Exit:               | Ko Box          |
|                                 | 230.0 V @ 60 HZ         | Motor Lead Termination:        | Flying Leads    |
| XP Class and Group:             | None                    | Motor Type:                    | 3542M           |
| XP Division:                    | Not Applicable          | Mounting Arrangement:          | F3              |
| Agency Approvals:               | CE                      | Power Factor:                  | 78              |
|                                 | CSA                     | Product Family:                | General Purpose |
|                                 | UR                      | Pulley End Bearing Type:       | Ball            |
| Auxillary Box:                  | No Auxillary Box        | Pulley Face Code:              | C-Face          |
| Auxillary Box Lead Termination: | None                    | Pulley Shaft Indicator:        | Standard        |
| Base Indicator:                 | No Mounting             | Rodent Screen:                 | None            |
| Bearing Grease Type:            | Polyrex EM (-20F +300F) | RoHS Status:                   | ROHS COMPLIANT  |

|                                       |                           |                                    |                     |
|---------------------------------------|---------------------------|------------------------------------|---------------------|
| <b>Blower:</b>                        | None                      | <b>Shaft Extension Location:</b>   | Pulley End          |
| <b>Current @ Voltage:</b>             | 9.100 A @ 208.0 V         | <b>Shaft Ground Indicator:</b>     | No Shaft Grounding  |
|                                       | 8.400 A @ 230.0 V         | <b>Shaft Rotation:</b>             | Reversible          |
|                                       | 4.200 A @ 460.0 V         | <b>Shaft Slinger Indicator:</b>    | No Slinger          |
| <b>Design Code:</b>                   | A                         | <b>Speed Code:</b>                 | Single Speed        |
| <b>Drip Cover:</b>                    | No Drip Cover             | <b>Motor Standards:</b>            | NEMA                |
| <b>Duty Rating:</b>                   | CONT                      | <b>Starting Method:</b>            | Direct on line      |
| <b>Electrically Isolated Bearing:</b> | Not Electrically Isolated | <b>Thermal Device - Bearing:</b>   | None                |
| <b>Feedback Device:</b>               | NO FEEDBACK               | <b>Thermal Device - Winding:</b>   | None                |
| <b>Front Face Code:</b>               | Standard                  | <b>Vibration Sensor Indicator:</b> | No Vibration Sensor |
| <b>Front Shaft Indicator:</b>         | None                      | <b>Winding Thermal 1:</b>          | None                |
|                                       |                           | <b>Winding Thermal 2:</b>          | None                |

| Nameplate NP1372L |              |  |  |  |  |      |      |  |     |    |   |                |   |
|-------------------|--------------|--|--|--|--|------|------|--|-----|----|---|----------------|---|
| CAT.NO.           | VUHM3611T    |  |  |  |  |      |      |  |     |    |   |                |   |
| SPEC.             | 35X066P797H1 |  |  |  |  |      |      |  |     |    |   |                |   |
| HP                | 3            |  |  |  |  |      |      |  |     |    |   |                |   |
| VOLTS             | 208-230/460  |  |  |  |  |      |      |  |     |    |   |                |   |
| AMP               | 9.1-8.4/4.2  |  |  |  |  |      |      |  |     |    |   |                |   |
| RPM               | 1750         |  |  |  |  |      |      |  |     |    |   |                |   |
| FRAME             | 182TC        |  |  |  |  | HZ   | 60   |  |     | PH | 3 |                |   |
| SER.F.            | 1.15         |  |  |  |  | CODE | L    |  | DES | A  |   | CL             | F |
| NEMA-NOM-EFF      | 87.5         |  |  |  |  | PF   | 78   |  |     |    |   |                |   |
| RATING            | 40C AMB-CONT |  |  |  |  |      |      |  |     |    |   |                |   |
| CC                | 010A         |  |  |  |  |      |      |  |     |    |   | USABLE AT 208V |   |
| DE                | 6206         |  |  |  |  | ODE  | 6203 |  |     |    |   |                |   |
| ENCL              | TEFC         |  |  |  |  | SN   |      |  |     |    |   |                |   |
|                   | IP44         |  |  |  |  |      |      |  |     |    |   |                |   |

| Parts List     |  |          |
|----------------|--|----------|
| Part Number    | Description                              | Quantity |
| SA178510       | SA 35X066P797H1                          | 1.000 EA |
| RA166583       | RA 35X066P797H1                          | 1.000 EA |
| 35FN3002A05SP  | EXFN, PLASTIC, 6.376 OD, .638 ID         | 1.000 EA |
| S/P111-000-002 | CORONA TEST, SUPER E MOTORS - FT. SMITH  | 1.000 EA |
| NS2512A01      | INSULATOR, CONDUIT BOX X                 | 1.000 EA |
| 35CB4007       | KOBX,W/PRIMER (REL# 79097-49-C)          | 1.000 EA |
| 35GS3009       | GASKET, KOBX 35CB4006 (411881-15A)       | 1.000 EA |
| WD4101A13      | STEEL CAPLUG,BP-1 1/8, PLUG D3561S       | 1.000 EA |
| 51XB1016A05    | 10-16X5/16HX WA SL SR TYB (F/S)          | 2.000 EA |
| 11XW1032G06    | 10-32 X .38, TAPTITE II, HEX WSHR SLTD U | 1.000 EA |
| HW3001B01      | BRASS CUP WASHER, FOR #10 SCREW          | 1.000 EA |
| 35EP3122A00    | FREP TEFC ASSEMBLY FOR ROUTING           | 1.000 EA |
| HW4500A01      | 1641B(ALEMITE)400 UNIV, GREASE FITT      | 1.000 EA |
| HW5100A03      | WAVY WASHER (W1543-017)                  | 1.000 EA |
| 35EP3304A01    | STD PULLEY 182-4TC ENCL 206 BRG W/ GREAS | 1.000 EA |
| HW4500A01      | 1641B(ALEMITE)400 UNIV, GREASE FITT      | 1.000 EA |
| 10XN2520A24    | 1/4-20X 1 1/2 HEX HD X                   | 4.000 EA |
| HW1001A25      | LOCKWASHER 1/4, ZINC PLT .493 OD, .255 I | 4.000 EA |
| 51XB1214A16    | 12-14X1.00 HXWSSLD SERTYB                | 1.000 EA |
| 35FH4005A84SP  | IEC FH W/GRSR, NO DIMPLES PRIMED         | 1.000 EA |
| 51XW1032A06    | 10-32 X .38, TAPTITE II, HEX WSHR SLTD S | 3.000 EA |
| 35CB4519       | CB LID W/BLACK PRIMER                    | 1.000 EA |
| 35GS3019       | GASKET, FOR KOBX LID 35CB4519            | 1.000 EA |
| 51XW0832A07    | 8-32 X .44, TAPTITE II, HEX WSHR SLTD SE | 4.000 EA |

| <b>Parts List (continued)</b> |   |                 |
|-------------------------------|---|-----------------|
| <b>Part Number</b>            | <b>Description</b>                      | <b>Quantity</b> |
| HW2501E16                     | KEY, 1/4 SQ X 1.750                     | 1.000 EA        |
| HA7000A02                     | KEY RETAINER RING, 1 1/8 DIA, 1 3/8 DIA | 1.000 EA        |
| 85XU0407S04                   | 4X1/4 U DRIVE PIN STAINLESS             | 2.000 EA        |
| MJ1000A02                     | GREASE, MOBIL POLYREX EM - 124047       | 0.050 LB        |
| MG1025N19                     | MUNSELL 8.5BG 3.57/2.0, GLOSS 30, B/G,  | 0.017 GA        |
| HA3100A24                     | THRUBOLT 10-32 X 10.625                 | 4.000 EA        |
| LB1119N                       | WARNING LABEL                           | 1.000 EA        |
| LC0005                        | CONN.DIA.,TY M,9-LD,DUAL VOLT,REVERSING | 1.000 EA        |
| MN416A01                      | TAG-INSTAL-MAINT no wire (1200/bx) 3/19 | 1.000 EA        |
| NP1372L                       | ALUM UL CSA CE CC                       | 1.000 EA        |
| 36PA1000                      | PKG GRP, PRINT PK1016A06                | 1.000 EA        |

**AC Induction Motor Performance Data**

Record # 27555 - Typical performance - not guaranteed values

|                               |                    |                        |
|-------------------------------|--------------------|------------------------|
| <b>Winding:</b> 35WGP797-R001 | <b>Type:</b> 3542M | <b>Enclosure:</b> TEFC |
|-------------------------------|--------------------|------------------------|

| Nameplate Data        |              |              |    | 460 V, 60 Hz:<br>High Voltage Connection |                          |
|-----------------------|--------------|--------------|----|--|--------------------------|
| Rated Output (HP)     | 3            |              |    | Full Load Torque                         | 9.08 LB-FT               |
| Volts                 | 208-230/460  |              |    | Start Configuration                      | direct on line           |
| Full Load Amps        | 9.1-8.4/4.2  |              |    | Breakdown Torque                         | 39.7 LB-FT               |
| R.P.M.                | 1750         |              |    | Pull-up Torque                           | 23.2 LB-FT               |
| Hz                    | 60           | Phase        | 3  | Locked-rotor Torque                      | 27.3 LB-FT               |
| NEMA Design Code      | A            | KVA Code     | L  | Starting Current                         | 36.6 A                   |
| Service Factor (S.F.) | 1.15         |              |    | No-load Current                          | 2.27 A                   |
| NEMA Nom. Eff.        | 87.5         | Power Factor | 78 | Line-line Res. @ 25°C                    | 4.59 Ω                   |
| Rating - Duty         | 40C AMB-CONT |              |    | Temp. Rise @ Rated Load                  | 66°C                     |
| S.F. Amps             |              |              |    | Temp. Rise @ S.F. Load                   | 83°C                     |
|                       |              |              |    | Locked-rotor Power Factor                | 45                       |
|                       |              |              |    | Rotor inertia                            | 0.248 LB-FT <sup>2</sup> |

Load Characteristics 460 V, 60 Hz, 3 HP

| % of Rated Load | 25   | 50   | 75   | 100  | 125  | 150  | S.F. |
|-----------------|------|------|------|------|------|------|------|
| Power Factor    | 37   | 58   | 71   | 78   | 82   | 85   | 80   |
| Efficiency      | 79.9 | 86.5 | 87.8 | 87.5 | 86.5 | 85   | 86.9 |
| Speed           | 1789 | 1777 | 1764 | 1750 | 1734 | 1717 | 1740 |
| Line amperes    | 2.46 | 2.88 | 3.46 | 4.16 | 4.99 | 5.91 | 4.66 |

Performance Graph at 460V, 60Hz, 3.0HP Typical performance - Not guaranteed values

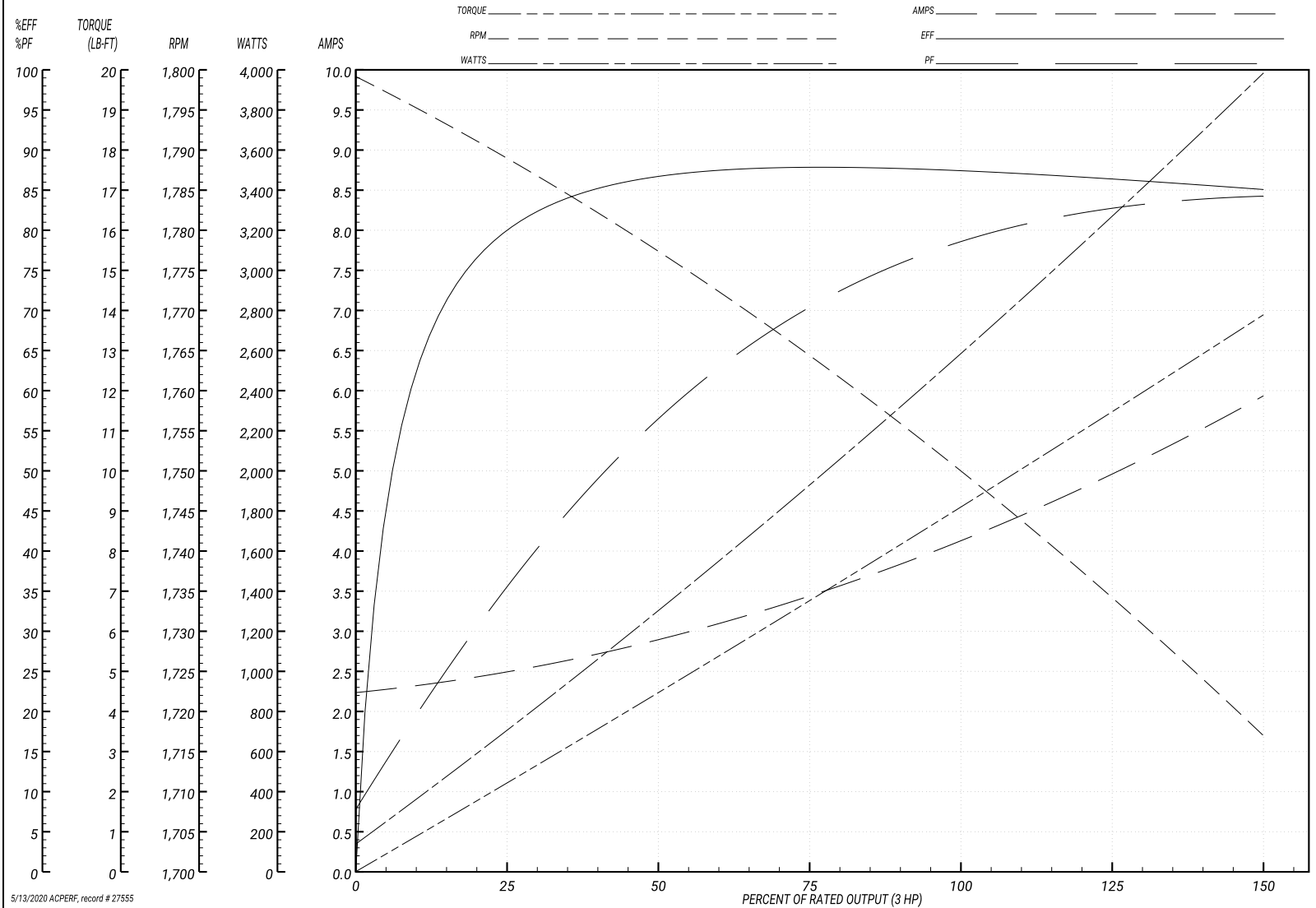
ABB Motors and Mechanical Inc.

WINDING # 35WGP797

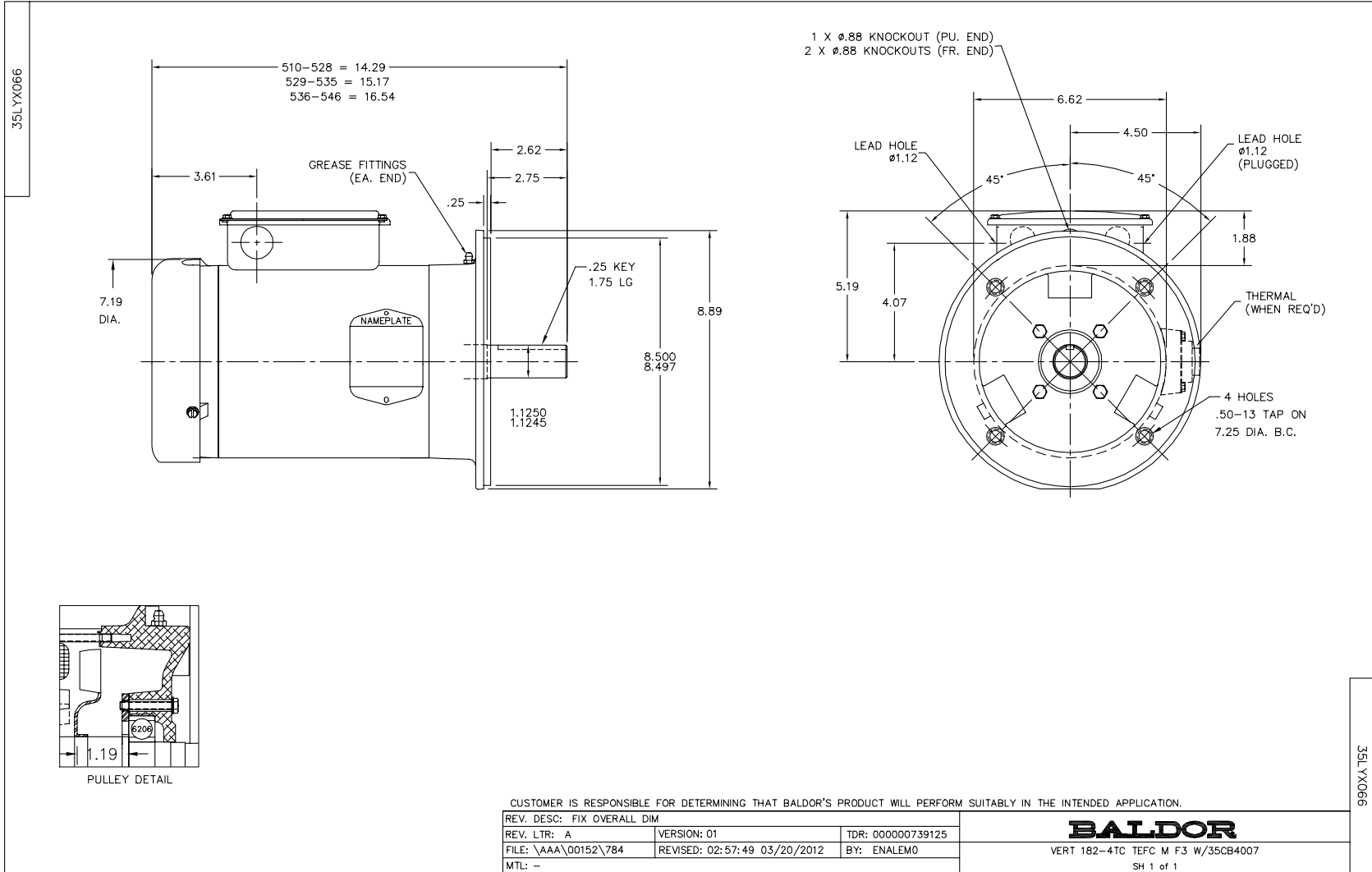
Typical performance - not guaranteed values.

3 HP 3 PH 60 HZ 1750 RPM 460 V 3542M

TORQUES(LB-FT): PO=39.7 PU=23.2 LR=27.3 LRA=36.6



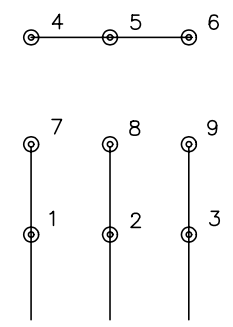
5/13/2020 ACPERF, record # 27555



CD0005

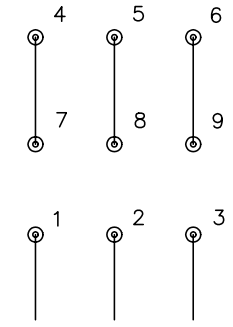


LOW VOLTAGE  
(2Y)



LINE

HIGH VOLTAGE  
(1Y)



LINE

NOTES:

1. INTERCHANGE ANY TWO LINE LEADS TO REVERSE ROTATION.
2. OPTIONAL THERMOSTATS ARE PROVIDED WHEN SPECIFIED.
3. ACTUAL NUMBER OF INTERNAL PARALLEL CIRCUITS MAY BE A MULTIPLE OF THOSE SHOWN ABOVE.
4. LEAD COLORS ARE OPTIONAL. LEADS MUST ALWAYS BE NUMBERED AS SHOWN.

|   |         |                         |              |
|---|---------|-------------------------|--------------|
| REV. DESC: REVISE TO SHOW OPTIONAL COLORS |         |                         |              |
| REV. LTR: E                               | BY: JLP | REVISED: 01/19/99 10:15 | TDR: 0171435 |
| 900000                                    |         | FILE: AAA00005140       | MDL: -       |
|   |         | MTL: -                  |              |

**BALDOR ELECTRIC Co.**

3PH, DV, 9 LEADS

CD0005